

Solutions eNewsletter

December 2012

Volume 6, Number 12

In This Issue

[SuperStorm Sandy Devastates NJ and its Friends](#)

[Joint Meeting Preview](#)

[Pete Seeger & Friends Concert](#)

[Whale Pond Brook Cleanup](#)

[Continued Vigilance](#)

[FMERA Disdains Transparency](#)

[2012 BOD Election Ballot](#)

[Sandy: Give or Get Help](#)

[NJFC Website Become a Member](#)

Monthly Joint Clearwater--Sierra Club Meeting,
Monday, November 26, 6-8:00pm,
Student Life Center (SLC)
Brookdale Community College

Board of Directors/Fundraising Mtg
November 28, 7pm
25 Peters Place, Red Bank

Pete Seeger & Friends Concert
November 30, 7pm
Breslin Theater, Lodi, NJ

Clearwater Sponsors
Whale Pond Brook Cleanup
Behind Hess Gas Station

SuperStorm Sandy Devastates NJ and its Friends

The unprecedented Superstorm Sandy roared ashore on the Jersey shore coast and has laid waste to a great deal of NJ--devastating homes, businesses, and peoples' lives. Among those victims were members of NJ Friends of Clearwater who lost their homes, possessions, and memories. In the midst of the devastation, NJFC members helped and comforted not only their own but others in need. We thank those members and will continue to seek out and support other efforts for aiding those in need.

Donate to Displaced NJFC Members



Look in this newsletter, in future blasts, our website, and emails for lists of events and opportunities to help. For those NJFC members continuing to need assistance, write to us at membership@njclearwater.org. For all readers, some important help lines are listed in a section below entitled

NJ Clearwater Urges You To Give or Get Help

Joint Clearwater-Sierra Club November Meeting Herb Segar Discusses "Beneath the Garden State--Exploring Aquatic New Jersey"

Noted nature and wildlife photographer Herb Segars, who specializes in marine subjects, will describe some of the many photographs he has taken of the underappreciated aquatic world off the New Jersey coast at 6:30 p.m., Monday, Nov. 26 at Brookdale Community College, Lincroft. The joint meeting of the college's Environmental Club, and members of the N.J. Friends of Clearwater and the Jersey Shore (Monmouth) Group of the Sierra Club, is open to the public.

2137 Route 35N, Oakhurst NJ 07755,
December 8, 10am

December NJFC General Membership
& Eleciton Meeting,
December 9, 11am
Eatontown Public Library
Broad St, Eatontown

Environmental Committee Mtg
Sunday, Dec 16, 8:30-10am
Cobblestone Restaurant, Eatontown



[Google Directions from Your Location to Monthly Meeting @ Student Life Center, Brookdale](#)

Board of Directors
President: Joellen Lundy
VP: Jim Franchi
Ed Dlugosz, Ben Forest, Andrea Spinelli, Marilyn Johnson, George Moffatt, Ingrid Heldt, Lynn Humphrey

Article Deadline for Next Issue is Last Friday of Month

Donate to NJFC

Donate



He has spent hundreds of hours scuba diving beneath the nutrient-rich Atlantic Ocean photographing fish, invertebrates, turtles, whales, seahorses, seals and birds. He has just published a book of underwater photographs, "Beneath the Garden State -- Exploring Aquatic New Jersey," the result of his 30 years of photography. He explained, "My passion is photographing everything underwater in the Atlantic waters off my home state of New Jersey. It is not the easiest place to photograph but I can't seem to get enough of it." His book will be available at the meeting. His website is at <http://www.gotosnapshot.com/>.

The Joint Meeting of NJFC-Sierra and presentation are hosted by BCC's Environmental Club to encourage BCC students to be involved in statewide and national debates on the importance of strong environmental regulations. A cash buffet begins at 6:00 p.m. and Mr. Segars' presentation begins at 6:30 p.m.

[Google Directions from Your Location to Monthly Meeting @ Student Life Center, Brookdale](#)

Pete Seeger and Friends Concert

7pm, Friday, November 30
Breslin Theater, Lodi, NJ

Pete & Toshi Seeger Wetlands Preservation Concert Series #4

A JMH Dull Production

In the wake of hurricane Sandy, an environmental concert is fitting. It is VERY FITTING that the primary artist in that concert be an artist known worldwide for successful environmental activism. Featured with Pete are his Friends:

- Tony Trischka - "revered banjo player - one of the most influential in the current acoustic world" - mentor of Bela Fleck - often plays in duo with Steve Martin on Letterman. - www.TonyTrischka.com
- Floyd Vivino (Uncle Floyd) - "bawdy blue collar vaudeville shtick and honky-tonk piano" - the loved top banana of comedy, candidate for NJ's Entertainment Hall of Fame.
- Spook Handy - working troubadour often travels with Seeger - www.SpookHandy.com
- Loretta Hagen - #1 folk album on NJ charts - "Mud and Stone" - www.LorettaHagen.com
- RJ Storm and Old School - "bluegrass fresh from the Newport Folk Festival" - Hudson Friends of Pete - RJStormAndOldSchool.com - "on the national musical ladder!"
- The Dull Music Band - musically host the entire series - some favorites of Pete - a band with rousing pro-active message - www.dullmusic.com

There will be a pre-concert expo featuring booths and information tables hosted by the **NJ Friends of Clearwater**; Audubon Society; Overpeck Preserve; meadowlands artists and videographers; members of the Gore team, etc. An environmental activism award will be given for outstanding

stewardship.

When: 7:00 Environmental Expo / 7:45 concert

Where: Breslin Theater, Felician College, 246 South Main St, Lodi, NJ 07644;

Tickets/Info: www.dullmusic.com; \$20 / \$30 / \$35 / \$40

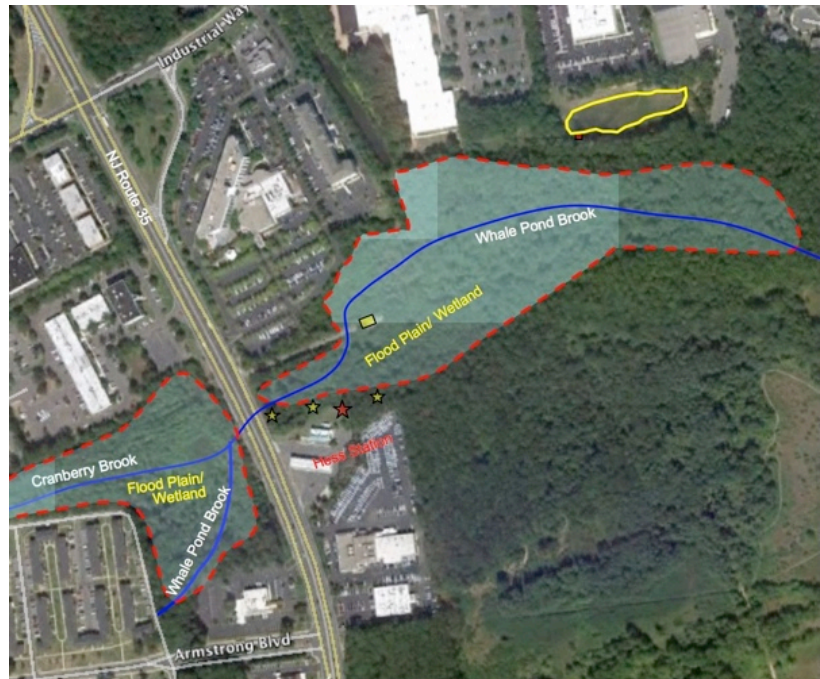
Walk-up Box Office: Steve's Coin and Stamp; 2 Franklin Place, Rutherford, NJ; 201 - 935 - 3737

Whale Pond Brook Cleanup

Who?: NJ Clearwater in coordination with Whale Pond Brook Watershed Association

What?: WHALE POND BROOK CLEANUP

When?: December 8 2012, 9:30AM Registration until NOON



Where?: Back lot of Ocean Twsp Hess Gas Station, northbound, east side of Rt 35

Why?: This Cleanup is part of the effort to restore/renew Whale Pond Brook Watershed to its pre-sprawl beauty and natural fish spawning activities. Sandy accelerated need to re-clean this area in preparation for creating an end-to-end Greenway from Eatontown to the Ocean.

How?: Physical Activity; teams will be formed & assigned in locations on south side of Whalepond adjacent to Hess

Parking: Sheraton Hotel south parking lot (walk south to Hess)

Equipment: Gloves & bags provided; Bring sturdy boots, long-sleeved shirts, long pants, hats & other clothing.

Continued Vigilance in the Wake of the Election and Sandy

The victory of President Obama in this election year is a positive outcome for environmentalists. However, eco-friendly laws and institutions are still on the endangered species list, being hunted down by big oil, pharmaceuticals, and the tea party at all levels of government.

Our precious Clean Water & Air Acts and the EPA are still the targets on the national level. In NJ, the NJDEP is

being dismantled by the Waiver Rule and outsourcing regulations enforcement to environmental contractors, known as LSRPs.

We urge citizens to heed the call by environmental groups like Clearwater to rally against the never-ending assaults and threats--by big-energy and developers--like fracking, processing fracking waste, unregulated sprawl, toxic waste disposal, etc.

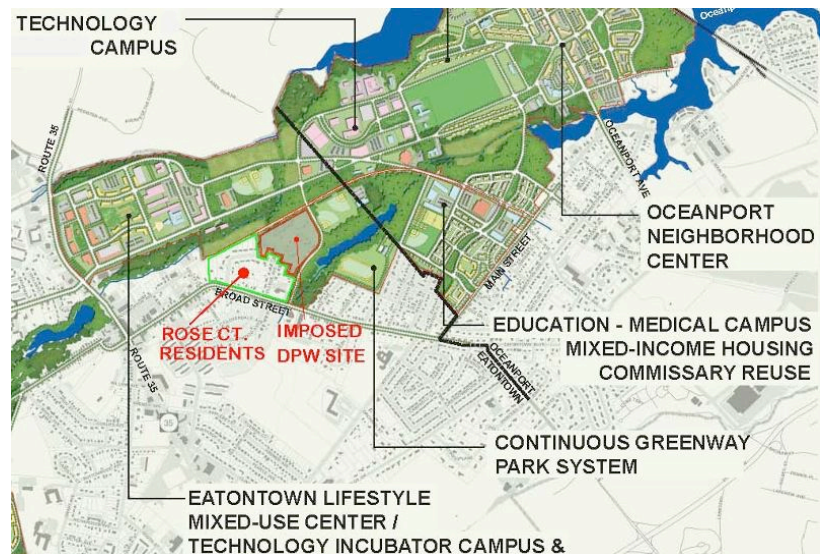
SuperStorm Sandy is also leaving a legacy of problems to clean water, soil, and air. Be on the lookout for poorly handled/disposal of the debris, waste, and equipment. In our haste to clean up, let's assure that it's done correctly. Report unacceptable practices including fraud and price-gouging.

FMERA Disdains Official Reuse Plan

by Ed Dlugosz


In its quest to show progress, FMERA has won a hollow victory by blatantly ignoring the official FMERPA Reuse Plan signed off by the Army, the State, and the local governments. The "victory" served as a wake-up call not only to the 3 directly affected communities, but show the people of the county and state that the planning was a waste of time and that FMERA can now do anything it wants--pitting county or town versus town.

Most recently, FMERA strong-armed Eatontown by placing Monmouth County DPW road crew--which was rejected by the Plan--next to a current Eatontown residential neighborhood in an area designated as open space these past 4 years. Not only are the residents upset at having active diesel trucks operating at all hours, the manner in which it came to light was less than transparent and threatening the town with worse scenarios--pay \$3M or accept commercial truckers--if they didn't accept new proposal.



MC DPW in Open Space Next to Residents. Something Is Out of Place!

This County DPW "scenario" doesn't even follow it own Finding of Suitability to Lease (FOSL) document's plan. By "clever"



environmental gerrymandering, it eliminated two buildings (1122/1124) of the Motor Pool whose contaminants readings were so high that the area would be found unsuitable to transfer much less lease. The placement of the microwave 911 communications Tower also ignored the FOSL and common sense. The original site was next to Landfill M-3 where there were no adjacent residences. The county is also in line to acquire the former Military Police lot and facilities for a similar function, where the Tower would have been a natural component of that function and away from residences. There are more surprises to come.

The only bright spot for the Fort Monmouth property is that Governor Christie has ordered FMERA, after FMERA's hemming and hawing, to make former residences available to displaced victims of SuperStorm Sandy.

Special December General Membership and Election Meeting!

Sunday, December 9, 2011 at 2 pm in the Eatontown Public Library

As another great and successful year ends, we at NJ Friends of Clearwater want to celebrate its conclusion and the start of a new year with a special December General Membership Pot Luck Party and Board of Directors Election Meeting. The Library is located at 33 Broad Street, Eatontown, NJ. Great time to renew or become a member! Bring a dish to share if you like. Bring your guitar, your drum, your voice!!!!

IT'S ALSO ELECTION DAY: Please vote for up to 8 nominees (this would include the names placed in nomination by the Board of Directors AND any possible write-in candidates). VOTE CAREFULLY - A ballot with MORE than the maximum 6 will be disqualified. ALSO, if you decide to change a vote, make sure your change(s) very clear or the vote may incorrectly count your choices:

- Ed Dlugosz
- Chrissie Goedkoop
- Lynn Humprey
- Marylin Johnson
- Tim Johnson
- Joellen Lundy
- Brian Ostering
- Isis Ra

The normal board rotation is one half one year and one half (+1) the next. One ballot per member and as many separate ballots constituting the family unit. To be counted, ballots must be at the post office by Saturday, December 10, 2011.

REMEMBER, YOU MUST BE A PAID-UP MEMBER TO VOTE. YOU CAN MAIL IN YOUR DUES OR BRING THEM TO THE MEETING. DUES are:

Individual \$25; Family \$35; Student/Senior \$10.

NJFC Membership Forms and Info:

www.mcclearwater.org/docs/membership-form.htm

NJ Clearwater Urges You To Give or Get Help

JOB SEEKERS

The U.S. Department of Labor (DOL) has provided emergency funding for New Jersey to hire approximately

1,000 temporary workers to assist with Superstorm Sandy clean-up activities.

Job-seekers should report to local One-Stop Career Centers. They also may send e-mails to sandyhelp@dol.state.nj.us, log onto www.Jobs4Jersey.com or call 1-877-682-6238 or 1-800-233-5005. Please be patient if lines are busy.

NJ 211
Dial 2-1-1 or 877-652-1148
E-mail
info@NJ211.org
www.nj211.org

GREAT LINK OF INFO
<http://www.nj211.org/hurricane.cfm>

NJ OEM
New Jersey Department of Environmental Protection
NJ DEPs Hurricane Sandy Page - precautionary wastewater measures, how municipalities can apply for emergency land use permits, when to boil their water, and much more
<http://www.nj.gov/dep/special/hurricane-sandy/>
If residents need to report an environmental incident impacting the state, please call DEP's 24-Hour Hotline: 1-877-927-6337

DHS' Division of Mental Health and Addictions Services' Office of Disaster and Terrorism
1-877-294-4357
1-877-294-4356 TTY
(voice callers use 7-1-1 NJ Relay)

REGISTER WITH FEMA
To file a claim with FEMA:
Call 800-621-3362
Make sure you register with FEMA.
www.fema.gov

REPORTING A GAS LEAK
To report a gas leak, contact your local gas provider:
New Jersey Natural Gas: 800-427-5325
PSE&G: 800-436-7734

FILING AN INSURANCE CLAIM
To file an insurance claim, if you can't find the company or agent's number:
Call the NJ Department of Banking and Insurance at 1-800-446-7467 or go to www.dobi.nj.gov

COMPLAINTS ABOUT INSURANCE COMPANIES
To report complaints about insurance companies:
Call the NJ Department of Banking and Insurance at 1-800-446-7467,
click [here](#) to file a complaint online.
A printable complaint form is [here](#):
<http://www.state.nj.us/dobi/complain.pdf>

COMPLAINTS ABOUT GAS & ELECTRIC

To report complaints about electric or gas utilities:

Call the NJ Board of Public Utilities: 800-624-0241 or 609-341-9188.

REPORT CONSUMER FRAUD

To report possible consumer fraud or price gouging by contractors or others:

State law makes excessive price increases illegal during a state of emergency, and for 30 days following the end of the emergency.

Call the NJ Division of Consumer Affairs at 862-209-0130 or 973-220-3474.

HURRICANE SANDY HOTLINE

Hurricane Sandy Hotline, a clearinghouse of information for residents affected by the storm 732-303-2882.

The hotline operates from 8 a.m. to 5 p.m. County staff and volunteers will offer general information such as non-emergency police phone numbers, how to make donations, utility contact numbers, curfew information, FEMA contact numbers, and emergency shelter information.

VOLUNTEERS NEEDED

Anyone looking to volunteer their time working at the distribution centers or wherever needed should contact Gary McTighe at Monmouth County OEM. Call him at 732-431-7400.

To provide volunteer assistance in the cleanup and restoration effort:

Call 1-800-537-7397

Backup numbers: 609-775-5236 or 908-303-0471.

Volunteers may also send an email to rowena.madden@sos.state.nj.us

REQUEST VOLUNTEER ASSISTANCE

To request volunteer assistance:

Call 211 or go online at www.nj211.org

APPLY FOR ASSISTANCE ONLINE

The Federal Government has a website that allows people to apply for assistance online, www.disasterassistance.gov

FINDING A SHELTER

To find a Red Cross shelter operating in your community, call 1-800-RED-CROSS or check online at <http://app.redcross.org/nss-app/>

HOW TO CLEAN UP AFTER THE STORM

For more information on how to safely clean up your home or business from the aftermath of Sandy, please click on this link: <http://emergency.cdc.gov/disasters/cleanup.asp>

DISTRUBTION CENTERS

Holy Family Church - 910 Route 36, Hazlet

Monmouth Park - 175 Oceanport Ave., Oceanport

SANTA'S SANDY HANDS PROJECT

<http://livepositivelytoday-com.webs.com/santa-s-sandy-hands>
The purpose of the Santa's Sandy Hands Project is to collect new unwrapped toys, new household items, gift cards, and wrapping needs November 10, 2012 through December 10, 2012. These items will be distributed as Christmas gifts to children and families displaced as a direct result of superstorm Sandy.

Contact: SantasSandyHands@gmail.com

[Forward this email](#)



Try it FREE today.

This email was sent to newsletter@mcclearwater.org by newsletter@njclearwater.org | [Update Profile/Email Address](#) | Instant removal with [SafeUnsubscribe™](#) | [Privacy Policy](#).

NJ Friends of Clearwater | P.O. Box 303 | Red Bank | NJ | 07701