



NJ Friends of Clearwater Newsletter

November 2011

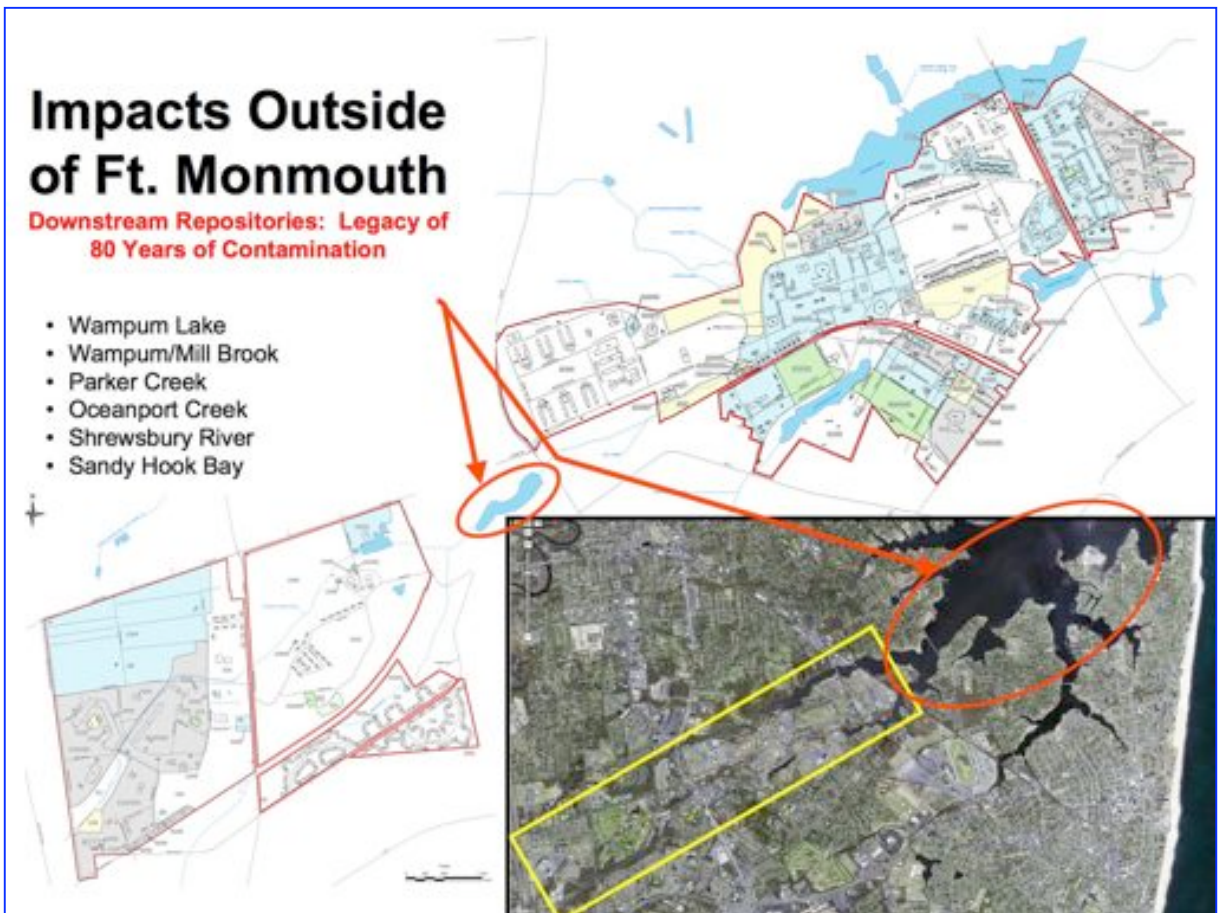
Volume 4, Number 11

Newsletter
Information
Editor:
Ed Dlugosz

Eatontown Resident Pushes for Study of Wampum Lake Previous studies say that Wampum Lake is the most polluted in the county

By [Shannon K. Winning](#) , Staff Writer, Eatontown-Tinton Falls Patch

Eatontown resident Ed Dlugosz believes the Army is responsible for the pollution of Wampum Lake and wants to launch a study to prove it.



Dlugosz, a member of the Restoration Advisory Board (RAB) for Fort Monmouth's redevelopment and the Environmental Advisory Committee of the Fort Monmouth Economic Revitalization Authority (FMERA), addressed the Borough Council on the topic Wednesday after a Patch story revealed that one member of the RAB has the intention of proving the Army has no responsibility for Wampum Lake's pollution.

Federal law requires that the Army clean up any environmental messes it makes. Dlugosz, chairman of the Eatontown Environmental Commission, said if Eatontown wants the Army to clean up Wampum Lake it's going to have to prove the Army polluted the lake, which lies just outside Fort Monmouth property.

"It's more fun to talk about bringing in business ... but all that is going to be stymied if this isn't taken care of," Council President Anthony Talerico said.

According to Dlugosz, who has been working on the issue for the past five years, the pollution of Wampum Lake is well documented. Dlugosz said that in 1990 the Monmouth County Health Department did a survey of 20 lakes, Wampum being

one of them. Their study, which was not aimed at assessing the cause of pollution, found that the lake contained all 13 heavy metals it tested for, 10 of them exceeding the severe effects level. Wampum Lake's cumulative score for contaminants made it the most polluted lake in the county.

That study was followed by another independent study done by Dr. Donald Dorfman of then Monmouth College. Dorfman sampled tissue from lake fish and found 13 carcinogenic heavy metals, Dlugosz said. It was after these studies that Eatontown put signs up at the lake warning against eating fish caught there.

More study is needed, Dlugosz said, to show how the contaminants got into the lake and he is hoping to team up with a university to conduct independent tests in the lake and the two brooks which feed it.

Once that data is analyzed, Dlugosz hopes to be able to point the finger at a specific polluter and force it to clean the lake. He estimates the cost of such a study at \$50,000.

Dlugosz said the key aspect of the study will be tracing metal contaminants to their specific uses.

According to Dlugosz, the Army has in the past blamed the lake's pollution on a company called Metallurgical Industries, which is now out of business. But according to documents from the Environmental Protection Agency, which Dlugosz cited, Metallurgical Industries was found to have only dumped into the public sewage treatment system and never into local waters.

Dlugosz and Sara Breslow, who lives on Lake Drive next to Wampum Lake, have been searching tax records and reading local history to see if there was ever another business located in the area that could have been responsible for this kind of heavy metal pollution. So far, Dlugosz said they haven't found one.

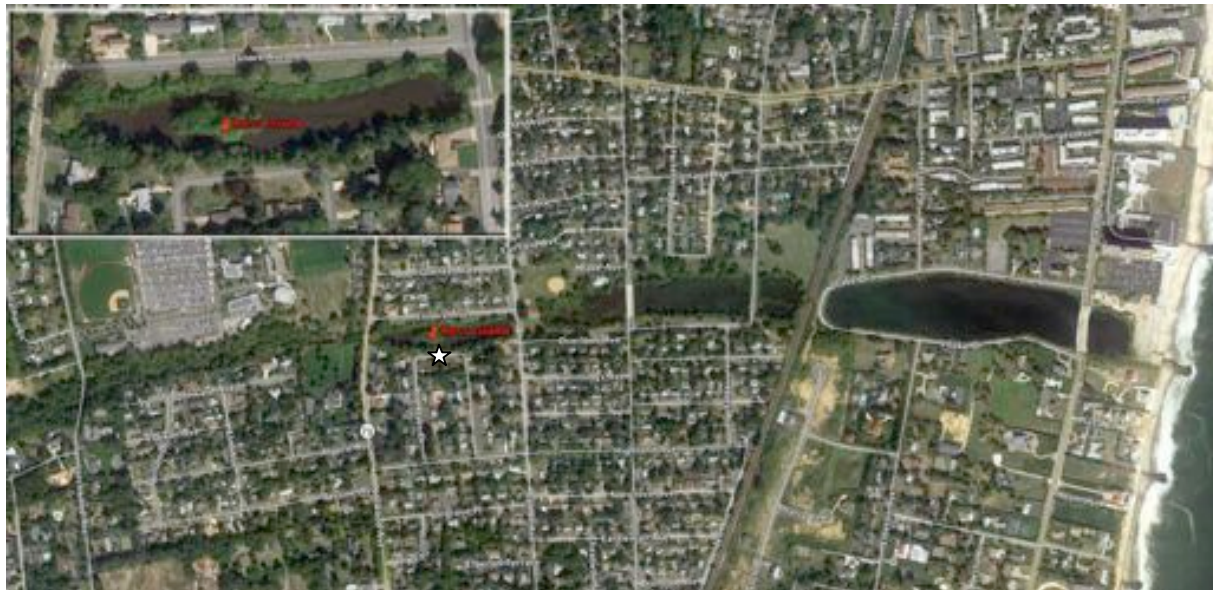
Editor's Note: See Patch website for blogs answering ill-informed comments @ <http://eatontown.patch.com/articles/wampum-pond#photo-8401982>

Whale Pond Brook Watershed Cleanup November 12, 2011:

Who?: Whale Pond Brook Watershed Association in cooperation with the Monmouth U. and sponsored by NJ Friends of Clearwater

What?: We will clean debris and invasive plants from both the Ross Island and the Takanassee Lake shoreline.

When?: November 12, 9:30am Registration until 12:30pm



Where?: Lakeside edge of Red Oakes Drive horseshoe, Elberon, Long Branch 07740. See map.

Why?: To restore one of the most beautiful assets on Whale Pond Brook Watershed. The Ross Island historic stone house will be a WPBWA's showcase

and symbol of our commitment to the Takanassee Lake restoration.

How: Hard work in a beautiful, seldom seen setting. John boats and hipboots. Gloves & bags provided; wear sturdy shoes/pants and bring clippers hand saws, pruners, loppers, eye protection, etc.



Contact: Faith Teitelbaum: faithteitel@gmail.com; Ed Dlugosz: info@mcclearwater.org

NJFC General Membership Meeting: New Time, New Location

NJ Friends of Clearwater (NJFC) and the Sierra Club will present "When Dinosaurs Roamed New Jersey, with Brookdale Community College hosting the event. The general meeting will be at a NEW TIME and LOCATION: 6:00 p.m. at Brookdale Community College. The general meeting will be at a NEW TIME and LOCATION: 6:00 p.m. at Brookdale Community College. This will be our regular meeting place and time, going forward with the exception of December's Holiday Party on Dec 11.

NJFC is holding a joint meeting with the BCC's Science Field Station at Sandy Hook and the Jersey Shore Group of the Sierra Club as an experiment to allow our speakers to reach a greater audience. A buffet will be available for the college students and Sierra and NJFC members at 6:00 p.m. Contributions from Sierra and NJFC members accepted. The meeting starts at 6:30 p.m. There will be a brief NJFC Membership meeting to discuss internal matters after the presentation.

Dr. William B. Gallagher, retired researcher and registrar of natural history at the N.J. State Museum and visiting lecturer at both Rutgers University and Rider University, will discuss dinosaurs and other creatures of the Cretaceous Period that lived and died in New Jersey. He also has authored a book, "When Dinosaurs Roamed New Jersey," which explains how the study of these remarkable creatures was spurred by early fossils found in New Jersey. He also is expected to explain why some scientists believe dinosaurs really aren't extinct. His book will be available for purchase.

To get to Brookdale, take Parkway Exit 109 to Route 520 West (Newman Springs Road, which becomes E. Main Street at the Lincroft campus). Take the traffic circle into the campus and follow the signs to the Warner Student Life Center (SLC), where the meeting will be in the Twin Lights 1 Room. Use parking lot 7. As you walk towards the building complex, Warner will be on your left. If lot 7 is full, use parking lots 5 or 6.

A campus map is at http://www.brookdalecc.edu/PDFFiles/MAPS/MAP_04_08.pdf